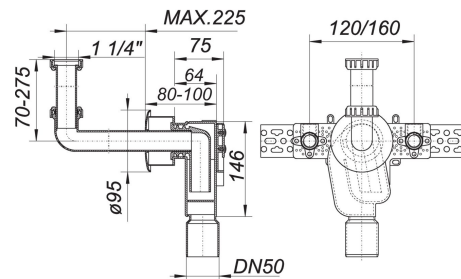


21. November 2019

**DALLMER****concealed trap type 310 KS, 1 1/4" x DN 50**

Product No. **130334**  
 EAN: 4001636130334  
 Discount group: 1



conforming to DIN 19541

specification:

- space saving built-in trap body
- sound-absorbing backing plate
- fixing bracket
- 2 brass elbows for water supply
- height adjustable inlet
- escutcheon
- removable trap insert

material:

trap in polypropylene

inlet white polypropylene, escutcheon white ABS

If installed with only sound insulated contact against the building structure, the requirements of all classes of sound proofing confirming to DIN 4109.10, table 1 and 2 are fulfilled.

Product No.	Description	Dimensions
143020	trap insert for 300, 310	