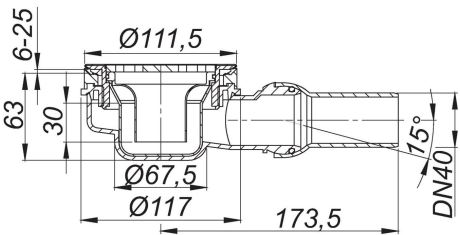


21. October 2019

shower trap ORIO 60 Select, stainless steel satin finish, DN 50

Product No. 161338
EAN: 4001636161338
Discount group: 1



extremely low build-in height (63 mm), for shower trays with a 90 mm outlet

- Specification:
- outlet DN 40 horizontal, with ball-joint, adjustable 0 – 15 degrees
 - trap insert, removable for cleaning
 - temporary blanking plate/installation key

Material:
trap polypropylene

Design-grate, 5 mm 316L stainless steel, satin finish

The outlet connector can be supplied in ABS to suit British Standard sizes and PE-HD conforming to DIN EN 1519. Please enquire.
Other colours on request.

Product No.	Description	Dimensions
160690	trap insert ORIO 60	