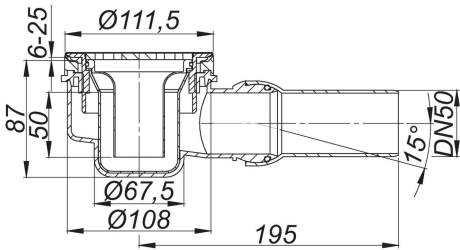


21. October 2019

shower trap ORIO Select, stainless steel satin finish, DN 50

Product No. 161307
EAN: 4001636161307
Discount group: 1



conforming to DIN EN 274
with build-in height only 87 mm, for shower trays with a 90 mm outlet

- Specification:
- outlet DN 50 horizontal, with ball-joint, adjustable 0 – 15 degrees
 - trap insert, removable for cleaning
 - temporary blanking plate/installation key

Material:
trap polypropylene

Design-grate, 5 mm 316L stainless steel, satin finish

The outlet connector can be supplied in ABS to suit British Standard sizes and PE-HD conforming to DIN EN 1519. Please enquire.
Other colours on request.

Product No.	Description	Dimensions
160683	trap insert ORIO	